

## Persons Living with HIV/AIDS, San Mateo County Comparison

As of December 2008, there were 1,152 persons living with HIV or HIV/AIDS in San Mateo County (Table 1). Compared to California and the United States, San Mateo County has a slightly greater percentage of White (51.6%) and Asian/Pacific Islander (7.2%) persons living with HIV/AIDS. San Mateo County has a larger proportion of persons living with HIV/AIDS over the age of 50 years compared to the US, which has a greater proportion of adults aged 20 - 39 years. The proportion of AIDS cases that identified IDU risk was higher in San Mateo County (16.2%) compared to California (9.1%) and the US (18.0%).

**Table 1: Demographic and Risk Characteristics of Persons Living with HIV/AIDS, San Mateo County, California, and the United States, 2008**

	San Mateo County <sup>1</sup>		California <sup>2</sup>		United States <sup>3</sup>	
	(N = 1,147)		(N = 100,366)		(N = 571,378)	
	Number	%	Number	%	Number	%
<b>Gender</b>						
Male	953	83.1	87,429	87.1	398,057	69.7
Female	194	16.9	12,038	12.0	146,692	25.7
Transgender	(4)	(4)	899	0.9	NA	NA
<b>Race/Ethnicity</b>						
White	595	51.6	47,414	47.2	181,380	31.7
Black	196	17.0	18,871	18.8	267,116	46.7
Hispanic	270	23.4	29,634	29.5	92,943	16.3
Asian/Pacific Islander	83	7.2	3,272	3.3	3,408	0.6
Multi-Race/Other/Unknown	2	0.2	1175	1.2	4,804	0.8
<b>Current Age</b>						
0 - 19	2	0.2	1,848	1.9	9,295	1.6
20 - 29	53	4.6	20,232	20.2	50,822	8.9
30 - 39	148	12.8	41,285	41.1	123,755	21.7
40 - 49	421	36.5	26,836	26.7	211,548	37.0
50+	528	45.8	10,165	10.1	156,511	27.4
<b>Exposure Category</b>						
MSM	646	56.1	64,879	64.6	253,804	44.4
IDU	187	16.2	9,149	9.1	102,601	18.0
Heterosexual contact	136	11.8	9,444	9.4	154,654	27.1
MSM/IDU	69	6.0	7,967	7.9	28,081	4.9
Other Risk/Not Specified	20	1.7	8,927	8.9	5,609	1.0

<sup>1</sup> San Mateo County data are reported through April 28, 2009 for cases diagnosed through December 2008 from the HIV/AIDS Reporting System (HARS).

<sup>2</sup> California Department of Health Services, Office of AIDS, HIV/AIDS Case Registry Section through December 2008. Available at <http://www.cdph.ca.gov/data/statistics/Pages/OAHIVAIDSSStatistics2008.aspx>

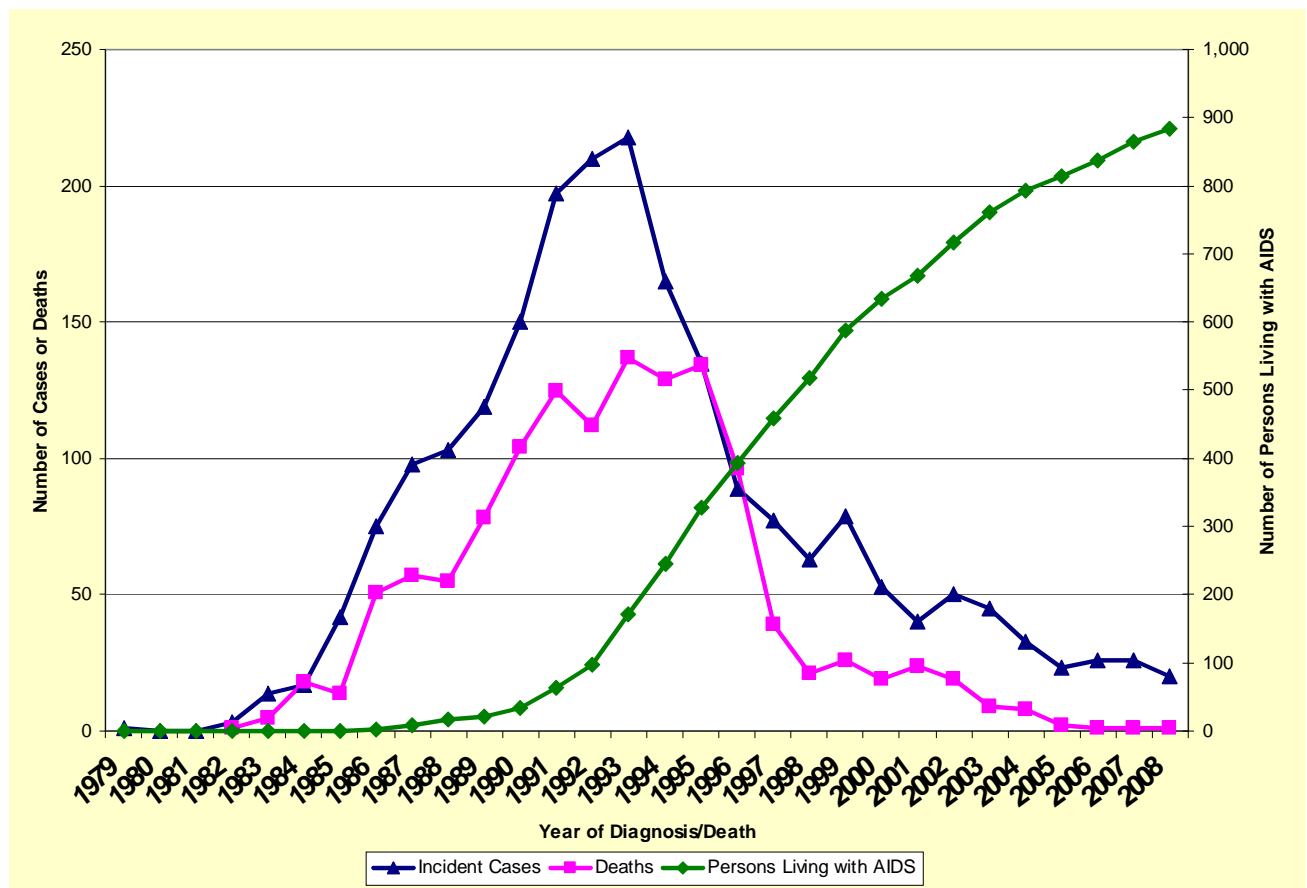
<sup>3</sup> Centers for Disease Control and Prevention. HIV/AIDS Surveillance Report, 2007. Vol. 19. Atlanta: U.S. Department of Health and Human Services, Centers for Disease Control and Prevention; 2009: [21-22]. <http://www.cdc.gov/hiv/topics/surveillance/resources/reports/>.

<sup>4</sup>With fewer than 10 transgender AIDS cases in San Mateo County, data are not reported.

## Overview of AIDS in San Mateo County

Based on all reported cases since 1979, the yearly number of AIDS cases and deaths peaked in 1993 in San Mateo County (Figure 1). The sharpest decline in AIDS deaths occurred between 1995 and 1997, corresponding to the introduction of protease-inhibitor based combination antiretroviral therapies. There were slight increases in incident AIDS cases in 1999 and 2002 but they decreased in subsequent years. By the end of 2008, there were 883 persons living with AIDS in San Mateo County. Mortality data for 2007-08 are incomplete.

**Figure 1: Incidence and Prevalence of AIDS Cases and AIDS Related Deaths, San Mateo County, 1979-2008**

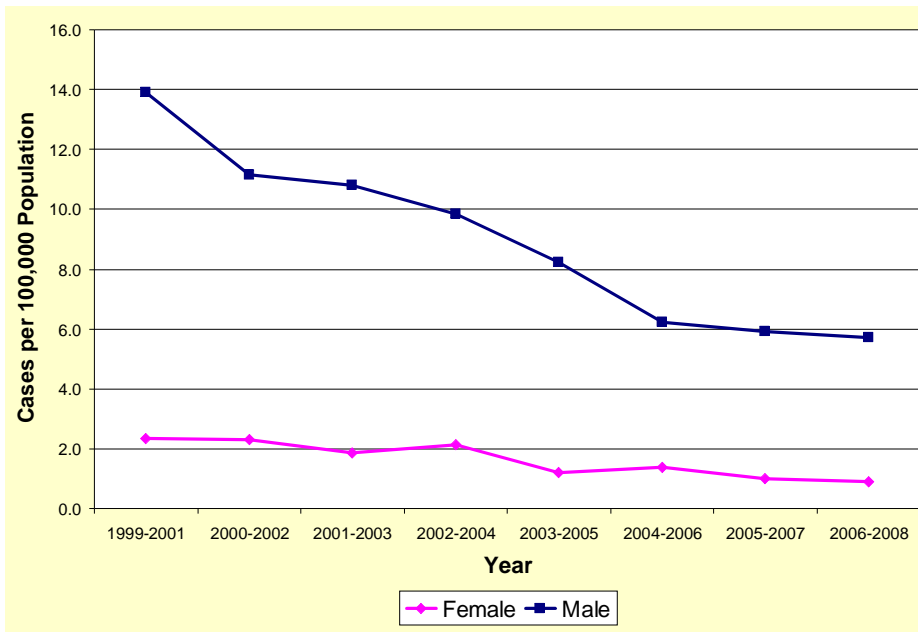


# Trends in AIDS Incidence, San Mateo County

## Gender

In San Mateo County, AIDS cases have primarily occurred among males (Figure 2). The AIDS incidence rates among both males and females have steadily declined since 1999. The 3-year average AIDS incidence rate for 2006-08 per 100,000 residents was 5.7 cases among men and 0.9 cases among women.

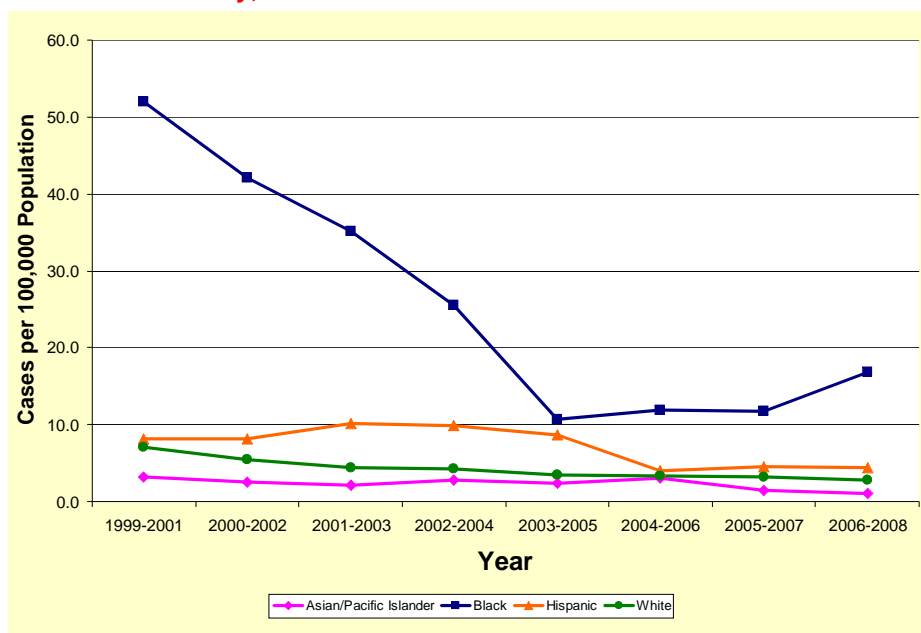
**Figure 2: AIDS Incidence Rates by Gender, 3-Year Averages, San Mateo County, 1999-2008**



## Race/Ethnicity

Since 1999, AIDS incidence among African Americans has decreased, yet it is still the highest compared to all other race/ethnicities (Figure 3). The average AIDS rate among Whites has declined over the past 10 years and reached a 3-year average low in 2006-08 of 2.8 AIDS cases per 100,000. The 3-year average incidence rate peaked in 2001-03 among Hispanics, but it has decreased in subsequent years.

**Figure 3: AIDS Incidence Rates by Race/Ethnicity, 3-Year Averages, San Mateo County, 1999-2008**



## Ryan White Eligible Service Utilization, San Mateo County

San Mateo County began an incremental rollout of ARIES in June of 2008. As of December 2008, all agencies receiving Ryan White funding in San Mateo County were utilizing ARIES to track services. For calendar year 2009, males account for more than three-fourths of the population accessing Ryan White eligible services. Latinos comprise over one-third of the population accessing services, followed by White then Black/African American. Almost two-thirds of the population are between ages 40-59. Nearly half of the population reports MSM as behavioral risk.

**Table 2: Demographic and Risk Characteristics of Persons Accessing Ryan White Eligible Services, San Mateo County, 2009**

	Number	%
<b>Gender (N = 604)</b>		
Male	462	76.5
Female	137	22.7
Transgender MTF	5	0.8
<b>Race/Ethnicity (N = 600)</b>		
American Indian or Native Alaskan	4	0.6
Asian	25	4.2
Black or African American	119	19.8
Hispanic or Latino	219	36.5
Native Hawaiian or Other Pacific Islander	13	2.2
White	187	31.2
More than one race	20	3.3
Unknown/Unreported	13	2.2
<b>Current Age (N = 604)</b>		
0 - 19	2	0.3
20 - 29	42	6.9
30 - 39	114	18.9
40 - 49	206	34.1
50 - 59	177	29.3
60 - 69	54	8.9
70 - 79	7	1.3
80 - 89	2	0.3
<b>Exposure Category (N = 577)</b>		
MSM	256	44.4
IDU	98	17.0
Heterosexual contact	55	9.5
MSM and IDU	21	3.6
Hemophilia/Receipt of blood or blood components	16	2.8
Perinatal transmission	3	0.5
Other Risk/Not Specified	128	22.2

## Challenges for San Mateo County STD/HIV Program

The San Mateo County STD/HIV Program has undergone significant funding changes over the past two years. In Fiscal Year 2009-2010, we received a increase of 5.5% (\$109,345) through the San Francisco EMA. However, at the same time, we received a 65% decrease (\$618,762) from the State Office of AIDS. With the elimination of the Therapeutic Monitoring Program, we also incurred an additional cost of \$50,000 for laboratory tests. This created a total decrease in real funding of \$559,417 for the year.

For Fiscal Year 2010-2011, we have received a decrease of 1.9% (\$39,348) through the San Francisco EMA. The State Office of AIDS also notified us of an additional decrease of 34.2% (\$146,504). Both decreases equated to a total of \$185,852 for the year.

Combining both years, funding has decreased almost three-quarters of a million dollars (\$745,269).

San Mateo County has experienced an increase in the population seeking Ryan White funded services. During the first four months of 2010, thirty-two (32) new clients have accessed services. This is an increase of 5.3% over the previous year's client population.

The San Mateo County HIV Program Community Board has provided input throughout this period of funding reductions. The Community Board meets as a full board quarterly, with the Executive Committee meeting on the months in between. During the April full board meeting, the STD/HIV Program Director provided the board with information as to the known funding issues at the time. The State information had not been received. The board affirmed the prioritization from the previous year as follows:

**Core Services**

1. Outpatient/Ambulatory Care
2. Oral Health/Dental Care
3. Mental Health Services
4. Medical Case Management
5. Substance Abuse-Outpatient

**Support Services**

1. Housing Services
2. Food Program
3. Emergency Financial Assistance
4. Substance Abuse-Residential
5. Outreach/Transportation

The STD/HIV Program is committed to maintaining all service categories. The decrease in funding will be shared across service categories. The impact on county-staffed services over the past two years has equated to the elimination of: 1 FTE Health Educator, 1 FTE Outreach Worker, 1 FTE Social Worker. Impacts to contracted services include decreases in dental services, mental health therapy services, housing services, food assistance, emergency financial assistance and substance use services.

<b>Table 3: Demographics, San Mateo HIV Program Community Board (N = 11)</b>		
	Number	%
<b>Gender</b>		
Male	8	72.7
Female	2	18.2
Transgender MTF	1	9.1
<b>Race/Ethnicity</b>		
Black or African American	5	45.5
White	6	54.5
<b>HIV status</b>		
Positive	8	72.7
Negative	2	18.2
Unknown	1	9.1